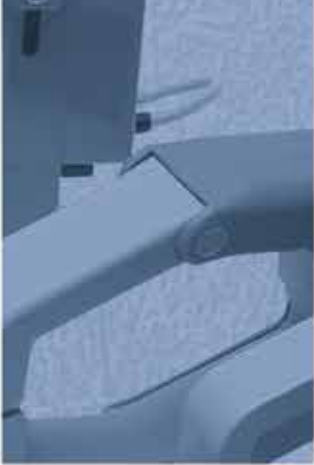


We have been designing, developing and manufacturing open frame current transducers, mainly current clamps AC & DC, for 40 years.

Our products allow the measure of current and power, network quality analysis, leakage current detection, data transmission...



## Universal Technic

supporting your measures since 1975



Our development department is characterized by its reactivity and its concern for customers' needs. We always try to adapt/customize the products to suit our customers' applications. Working with OEM, resellers and final users, we offer a wide range of products (over 3500 references) allowing the measure of current AC and DC from 1mA up to 15000A.



The main applications are test & measurement, power quality, energy management and automotive.

## THE AC MICRO CLAMPS

The micro clamps can enclose cables with a max. diameter of 15mm and measure current from 10mA up to 200A\*.

The M1 and M2 can only be used on insulated conductors while the M3 and M4 meet the 600V CAT. III safety level requirements. The longer casing of the M2 and M4 allow space for a PCB, useful for some applications, for example to improve the phase shift for power measurement or rectifying the signal for DC data loggers.



\* Range of possibilities, depend on the transformation ratio chosen.



## THE AC MIDDLE SIZED CLAMPS

They are divided into three families, the US, the S and the SM, each having its own characteristics.

### The US

The US can enclose cables of 43mm diameter max and one of their jaws allows a pendulum swing easing the access to conductors. They can only be used on insulated conductors and can measure currents from 500mA to 1000A\*

### The S

The S clamps can enclose conductors up to 50mm and measure currents from 100mA to 1200A\*. They are a reliable and economic solution for common applications.

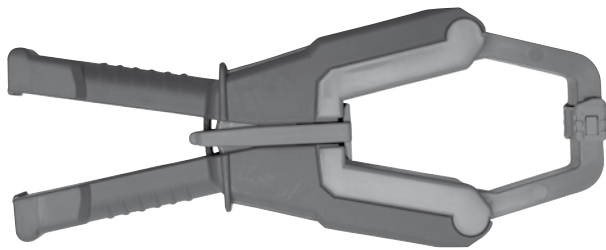
### The SM

The SM clamps can enclose cables with a max diameter of 54mm and measure currents from 1mA to 1400A\*. Their technology and distributed winding improve the accuracy of the measurement.

\* Range of possibilities, depend on the transformation ratio chosen.

## THE AC LARGE CLAMPS

They can be divided in six families, E16, H16, P16, E32, H32 and P32 depending on the size of their jaws. Their design allows their use on busbars.



### The E16, H16 and P16

The E16, H16 and P16 can measure currents from 5A to 1600A\* and, with their greater section magnetic circuit, can deliver 5A at secondaries. The E16 can enclose conductors up to 54mm (100x30 or 120x20 for bus bars), the H16 up to 67mm (112x38 or 122x30) and the P16 up to 80mm (100x57 or 120x48).

### The E32, H32 and P32

The E32, H32 and P32 can measure currents from 1A to 3200A. The E32 can enclose conductors with a max diameter of 56mm (100x32 or 120x20), the H32 up to 70mm (100x45 or 124x35) and the P32 up to 80mm (100x58 or 125x47).



\* Range of possibilities, depend on the transformation ratio chosen.



## THE HALL EFFECT CLAMPS (AC/DC)

We offer a range of Hall effect clamps, for DC current measurements. These models come in two versions, internal power supply (battery) and external (from the measuring device or a power supply).

### The M2.1C

The M2.1C, used only on insulated conductors, can measure currents from 5A up to 300A\* DC. Only available in the external alimentation version, they allow measures on cables with a max diameter of 15mm.

### The SC

The SC can measure currents from 5A to 2000A\* on conductors of max. 50mm diameters.

### The HC

The HC allow measures on 72mm max. diameter conductors (100x53 or 127x43). They can measure current from 10A up to 5000A\*.

### The PC

The PC clamps can measure currents from 10A to 7500A\* on conductors with a max. diameter of 80mm (100x64 and 122x54).

### The Mx

The Mx is the latest novelty developed by Universal Technic in 2016. This small Hall effect clamp allow measures of low current DC and AC (up to 50Khz) on small sized conductors (8mm max). It comes with two different transformation ratios, 20A/1V and 100A/1V and an automatic zero setting.



### The C104

The C104 current sensors can measure from 50A up to 15000A on bus bars (103x103mm).

They are mainly used in rail traction applications.

\* Range of possibilities, depend on the transformation ratio chosen.

# Summary table



MAX  
DIAMETER  
(mm)

RANGE OF  
MEASURING  
POSSIBILITIES\*

SAFETY  
LEVELS

MAX  
DIAMETER  
(mm)

RANGE OF  
MEASURING  
POSSIBILITIES\*

SAFETY  
LEVELS

## THE AC LARGE CLAMPS

	MAX DIAMETER (mm)	RANGE OF MEASURING POSSIBILITIES*	SAFETY LEVELS
<b>E16</b>	54	5A – 1600A	600V CAT III
<b>H16</b>	67	5A – 1600A	600V CAT III
<b>P16</b>	80	5A – 1600A	600V CAT III
<b>E32</b>	56	1A – 3200A	600V CAT III
<b>H32</b>	70	1A – 3200A	600V CAT III
<b>P32</b>	80	1A – 3200A	600V CAT III

## THE HALL EFFECT CLAMPS (AC/DC)

	MAX DIAMETER (mm)	RANGE OF MEASURING POSSIBILITIES*	SAFETY LEVELS
<b>M2.1C</b>	15	5A – 300A	30V CAT I
<b>SC</b>	50	5A – 2000A	600V CAT III
<b>HC</b>	72	10A – 5000A	600V CAT III
<b>PC</b>	83	10A – 7500A	600V CAT III
<b>Mx</b>	8	200mA – 100A	1000V CAT III
<b>C104</b>	103	50A – 15000A	30V CAT I

## THE AC MICRO CLAMPS

	MAX DIAMETER (mm)	RANGE OF MEASURING POSSIBILITIES*	SAFETY LEVELS
<b>M1</b>	15	10mA – 300A	30V CAT I
<b>M2</b>	15	10mA – 300A	30V CAT I
<b>M3</b>	15	10mA – 300A	600V CAT III
<b>M4</b>	15	10mA – 300A	600V CAT III

## THE AC MIDDLE SIZED CLAMPS

	MAX DIAMETER (mm)	RANGE OF MEASURING POSSIBILITIES*	SAFETY LEVELS
<b>US</b>	43	500mA – 1000A	30V CAT I
<b>S</b>	50	100mA – 1200A	600V CAT III
<b>SM</b>	54	1mA – 1400A	600V CAT III

# Universal Technic

1, rue Robert et Sonia Delaunay 75011 PARIS  
tel : (33) 1 43 700 800  
fax : (33) 1 43 48 44 07

www.universal-technic.com  
lut@fluke.com